



DEALER REFERENCE LIST

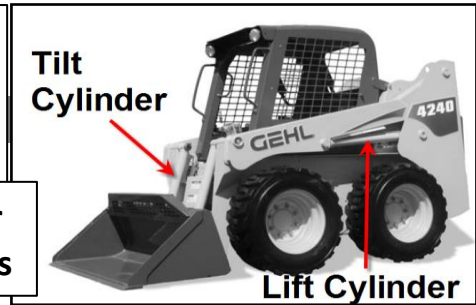
Table of Contents

- R Series - Page 1
- V Series - Page 1
- SL Series - Pages 1-2
- HL Series - Page 3

IMPORTANT: Parts are the same for GEN:1, GEN:2, Series I and Series II, E and non E series, EU, SX, SXT, DX, DXT machines unless noted. This list includes Lift and Tilt Cylinders only, see the machine parts manual for other cylinders and related parts.

Cylinder Seal Kits - Skid Loader
Quick Reference List

Cylinder Locations



Model	Serial Number	Lift Cylinder	Tilt Cylinder
HL Series			
2500		602897	602897
2500A Note A			
2600 Note B	Columbus (GEC)	064309	057148
2600 Note B	Lantex (L)	064294	064300
4300	Columbus (GEC)	061162	055086
4300	Lantex (L)	069448	069497
4400	3049 and Up (Columbus GEC)	061162	055086
4400	3048 and Before (Columbus GEC)	055086	055086
4500 Note B	Columbus (GEC)	061162	055086

Model	Serial Number	Lift Cylinder	Tilt Cylinder
4500 Note B	Lantex (L)	069448	069497
4600 Note B	Columbus (GEC)	061162	055086
4600 Note B	Lantex (L)	069448	069497
4700 Note B	Columbus (GEC)	061162	055086
4700 Note B	Lantex (L)	069448	069497

NOTES:

Note A) See parts manual 901572, must visually ID and measure cylinder.

Note B) Dealer identify markings L or GEC on cylinder body before ordering cylinder seal kit. See parts manual for more information.



DEALER REFERENCE LIST

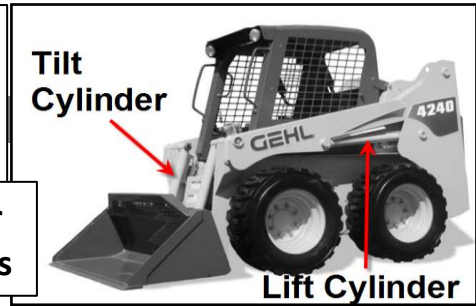
Table of Contents

- R Series - Page 1
- V Series - Page 1
- SL Series - Pages 1-2
- HL Series - Page 3

IMPORTANT: *Parts are the same for GEN:1, GEN:2, Series I and Series II, E and non E series, EU, SX, SXT, DX, DXT machines unless noted. This list includes Lift and Tilt Cylinders only, see the machine parts manual for other cylinders and related parts.*

Cylinder Seal Kits - Skid Loader
Quick Reference List

Cylinder Locations



Model	Serial Number	Lift Cylinder	Tilt Cylinder	Model	Serial Number	Lift Cylinder	Tilt Cylinder
-------	---------------	---------------	---------------	-------	---------------	---------------	---------------

Notes: